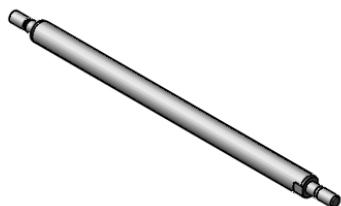


A	B	C	D	E	F	G	H	I	Useable stroke K inches
1/4"	.38	.25	.163	8-32	.03	.03	.008	7/32	3, 4, 5, 6, 7, 8, 10, 12, 16
3/8"	.50	.31	.250	1/4-20	.06	.03	.008	5/16	4, 6, 8, 10, 12, 16, 18, 24
1/2"	.63	.41	.312	5/16-18	.06	.06	.008	7/16	6, 8, 12, 18, 24, 36, 48
5/8"	.75	.50	.375	3/8-16	.06	.06	.016	1/2	6, 12, 24
3/4"	1.00	.63	.500	1/2-13	.08	.06	.016	5/8	6, 12, 18, 24, 36, 48
1"	1.25	.81	.625	5/8-11	.09	.08	.016	7/8	6, 12, 18, 24, 36, 48
1 1/4"	1.50	1.00	.750	3/4-10	.10	.09	.016	1	12, 24, 48
1 1/2"	2.00	1.25	1.000	1-8	.13	.10	.030	1 1/4	12, 24, 48, 72, 96
2"	2.50	1.50	1.250	1 1/4-7	.15	.13	.030	1 1/2	12, 24, 48, 72, 96

1. Tolerance on D dimension: +.000-.002
2. Diameter groove F is to clear a minor diameter of thread
3. Chamfer L is a heights of thread in radial measure on both ends of thread.
4. Tolerance on K dimension on parts up and including 18" in length: +/- .003, on parts up and including 36" in length: +/- .005, over 36" in length: +/- .008.
5. Wrench flats are optional
6. Shafts will be annealed around circumference in machined area
7. This end is optional. Thread on both ends is the same. Thread class 2A.



**PROPRIETARY AND CONFIDENTIAL**  
 THE INFORMATION CONTAINED IN THIS DRAWING IS THE SOLE PROPERTY OF LM76. ANY REPRODUCTION IN PART OR AS A WHOLE WITHOUT THE WRITTEN PERMISSION OF LM76 IS PROHIBITED.

DIMENSIONS ARE IN INCHES  
 TOLERANCES:  
 FRACTIONAL ± 1/16"  
 ANGULAR: MACH ± 1 deg  
 TWO PLACE DECIMAL ± .015  
 THREE PLACE DECIMAL ± .005

MATERIAL 1060  
 Shaft surface finish 8-12 RMS  
 Machined area finish 125

	NAME	DATE
DRAWN	SK	
CHECKED	MS	
ENG APPR.	MQ	
MFG APPR.	MQ	
Q.A.	TG	

COMMENTS:  
 Linear bearing shafting case harden 60-65 HRC

[www.LM76.com](http://www.LM76.com)

Threaded shafts for heavy duty applications

SIZE	DWG. NO.	REV.
<b>A</b>	Threaded shaft-HD	
SCALE:2:1	WEIGHT:	SHEET 1 OF 1